

UGL REGIONAL LINX



Track Possessions Manual CRN-MPN-OPS-1523658499-3

LINKING
COMMUNITIES.

CONNECTING
CUSTOMERS.



Table of Contents

Document Control.....	iii
1 Introduction.....	1
1.1 Purpose.....	1
1.2 Overview.....	1
2 Scope	2
2.1 Procedure Owner.....	2
2.2 Responsibilities.....	2
2.3 Reference documents.....	2
2.4 Definitions	3
3 CRN Possession Program Overview	3
4 Possession type and lead times.....	4
4.1 Aligned possessions	4
4.2 Non-aligned possessions.....	4
4.2.1 Primary non-aligned possessions.....	5
4.2.2 Secondary non-aligned possessions	5
4.3 Short notice works possessions	6
4.4 Emergency works possessions	7
4.5 Request for Emergency Possessions.....	7
5 Obtaining a Track Possession.....	7
5.1 Possession program development process.....	7
5.2 Choosing the appropriate possession	9
5.3 Possession planning and implementation requirements	9
5.3.1 Infrastructure alterations	9
5.3.2 Location of Works	9
5.3.3 Proposed track protection arrangements	9
5.3.4 Effect on rail services.....	9
5.3.5 Preferred Work Dates	9
5.3.6 Duration of track possession	10
5.3.7 Live Line Constraints	10
5.3.8 Work train/track machine involvement.....	10
6 Applying to Work Within an Aligned Possession.....	11
7 Publication of Track Possession Documentation.....	11
7.1 Publication of the possession program.....	11
7.2 Rail operator consultation	11
7.3 Adjoining network consultation	11
7.4 Consultation with the network owner.....	11
8 Track Possession Alterations	12



8.1	Changes to aligned possessions	12
8.2	Changes to non-aligned possessions.....	12
8.3	Cancelling a programmed track possession.....	12
9	Additional Information.....	12
9.1	Work trains.....	12
9.2	Ultrasonic testing	12
Appendix 1	UGLRL ATP Possession Request Form	13
Appendix 2	UGLRL Long Term Possession Request Form	14
Appendix 3	UGLRL LPA Worksite Request Form	16

Table of Figures

Figure 1 - Application Flowchart	8
Figure 2 - Rail operator consultation process.....	8

Table of tables

Table 1 - Aligned Possession Notice Period	4
Table 2 - Primary non-aligned Possession Notice Period	5
Table 3 - Passenger and Mandatory Freight Service Lines / Sections	5
Table 4 - Ad-hoc and Non-Passenger Service Lines / Sections	5
Table 5 - Low Effect Non-aligned Possession Notice Period	6
Table 6 - Short Notice Works Possession Notice Period	6
Table 7 - Emergency Works Possession Notice Period.....	7
Table 8 - Aligned Possession Timetable	11

Document Control

Function	Position	Name	Date
Originator	Manager, Network Operations	Brett Callingham	29.10.2021
Reviewer	Project Director, Rail Operations	Matt Baynie	01.11.2021
Controller	Document Controller	Wanda Kumeroa	02.11.2021
Approver	CEO UGL Regional Linx	John Pistak	02.11.2021

Revision	Issue Date	Revision Description
1.0	02.11.2021	Contractual Submission to Client

1 Introduction

1.1 Purpose

This manual describes the procedures used by UGL Regional Linx to manage track access requests on the NSW Country Regional Network (CRN).

This manual does not include requirements for management of environmental, legal and other obligations in the planning and delivery of construction works at worksites.

1.2 Overview

A **track possession** is the temporary suspension of rail services to allow work within the rail corridor to take place in a safe and efficient manner.

A track possession may include movement of work trains or other rail vehicles into and out of work sites, subject to the relevant UGL Regional Linx (UGLRL) Network Rules and Procedures.

Track possessions are planned in the manner described in this manual and enacted via the types of work on track 'authorities' described in the UGLRL Network Rules and Procedures.

To minimise disruption to passenger and freight services, Possessions on the CRN will be coordinated with possessions on the adjacent ARTC and/or Sydney Trains networks.

UGL Regional Linx delivers the following types of work within planned track possessions, following consultation and communication with relevant internal and external stakeholders.

- Routine Maintenance (RM),
- Major Periodic Maintenance (MPM),
- Annual Works Plan (AWP) related capital works,
- Non-Annual Works Plan (AWP) capital works, externally funded works and works carried out by third parties.

Track possessions are published in a **possessions program** and advertised in a rolling twelve (12) month format on the UGLRL website. This possession program aims to:

- minimise the risk to the cancellation of, or disruption to, passenger and freight services;
- maximise possession time to ensure safe and productive time on track is provided to carry out required works;
- provide suitable notice of possessions to rail operators and other stakeholders to ensure the commercial cost of any disruption is minimised;
- improve maintenance planning to ensure the efficiency and productivity of track works;
- issue possession timetables and notifications via Country Train Notices (CTNs);
- seek to coordinate possessions with maintenance activities at loading points;
- provide a process where rail operators are consulted during the development of the possession program and ensure the representative of the network owner, Transport Asset Holding Entity (TAHE), is:
 - aware of the possessions program;
 - informed of the process used to develop it;
 - can participate in the development of the possessions program; and
 - made aware of changes to the program that may affect the operations of the network or may precipitate delays to rail services, prior to any changes being implemented.

2 Scope

This document:

- details the types of track possessions available;
- provides guidance on the process necessary to gain approval for a track possession; and
- describes the obligations of the network manager to consult with rail operators and the network owner on the development of the possessions program and its implementation.

Note: The processes described in this manual for the development and implementation of track possessions are subject to all of the requirements detailed in the following:

- UGLRL Network Rules and Procedures
- UGLRL SAFE Notices
- UGLRL Network Local Appendices

2.1 Procedure Owner

The UGLRL Network Planning Business Partner is the document owner and is the initial point of contact for all queries relating to this document.

2.2 Responsibilities

Individuals planning or managing projects, maintenance supervisors, infrastructure managers and related parties are responsible for proposing track possession requests to the Network Planning Business Partner (Network Operations), commensurate with the type of work required to be performed and the processes described herein.

The Network Planning Business Partner is responsible for developing the track possession program and generation of associated CTNs.

2.3 Reference documents

The following documents and procedures support this document:

- Safety Management System (SMS), [URL to be advised]
- UGLRL Network Rules & Procedures, <https://www.uglregionallinx.com.au/en/ugl-regional-linx-operations/network-operations/network-rules-procedures-and-forms>
- Safety Interface Agreements (SAIs),
- Operational Impact Assessment (Possession Bid), [Document # to be provided]
- Rail operator access agreements and the TfNSW Operations Protocol Annexure G,
- UGLRL CRN Possession Programme, [URL to be advised]
- Country Train Notices, <https://www.uglregionallinx.com.au/en/ugl-regional-linx-operations/network-access/country-train-notice>
- Standard Working Timetable, <https://www.uglregionallinx.com.au/en/ugl-regional-linx-operations/network-access/standard-working-timetable>

2.4 Definitions

The following terms and acronyms are used within this document:

Term or acronym	Description
Adjacent Live Line	Track on which trains are running next to closed track
ARTC	Australian Rail Track Corporation
ATP	As Traffic Permits
AWP	Annual Works Program
CRN	Country Regional Network
CTN	Country Train Notice
Danger Zone	The area within 3 metres horizontally from the nearest rail, and any distance above or below these 3 metres, and any other area within the rail corridor unless a safe place exists or has been created
MPM	Major Periodical Maintenance
NCO	Network Control Officer
SMS	Safety Management System
SWTT	Standard Working Timetable
TAHE	Transport Asset Holding Entity; the representative of the network owner, TfNSW
TfNSW	Transport for New South Wales; the network owner represented by TAHE
TSR	Temporary Speed Restriction
UGLRL	UGL Regional Linx

3 CRN Possession Program Overview

The CRN track possession program is developed by the Train Planning Business Partner in conjunction with a range of internal and external stakeholders identified within this manual. Track possession programs are developed to accommodate the following works:

- AWP projects (including MPM works)
- Routine maintenance works
- Third-party funded projects
- Work executed by third parties within the rail corridor

Prior to publication in final form via a CTN, multiple draft possession programs may be developed and used to identify the effect of proposed track possessions on passenger and freight services, and related parties. The following are considered during the development of a track possession program:

- Minimising the effect of proposed works on rail services
- Requirements of project scopes within the AWP
- Third Party work requirements
- Special event timing and location
- Alignment with track possessions on either or both of the ARTC and Sydney Trains networks
- Resource availability for conducting proposed works

- Routine maintenance works program, including:
 - Ultrasonic rail testing
 - Ballast delivery and associated work train requirements
 - Rail grinding program

4 Possession type and lead times

Different types of possessions, and their related lead times, have been developed to achieve the aims and objectives described in this manual. Possession types include:

1. Aligned possessions. These are possessions aligned with those of adjoining networks to ensure disruption to rail services is minimised.
2. Non-aligned possessions. These are possessions that cannot be aligned with a possession on an adjoining network and are classified as:
 - a. Primary possession – delays or cancellation of passenger services or mandatory freight paths will be required, or
 - b. Secondary possession – delays or cancellations will only affect ad hoc train paths.
3. Short notice works possessions. These are possessions required to rectify an infrastructure problem that may, if not rectified, lead to deterioration of infrastructure and potentially threaten network service continuity.
4. Emergency works possessions. These are possessions imposed to rectify an urgent infrastructure problem that is threatening, or will threaten, network service continuity, or to address or remove a condition within the rail corridor that has the potential to escalate into a serious safety threat.

4.1 Aligned possessions

Where possible, possessions on CRN lines/sections used by passenger services and/or mandatory path freight services, will be aligned with possessions planned by and on adjoining networks. Aligning possessions with adjoining networks will minimise the effect of a CRN possession on rail operators and their customers.

Table 1 details the lead times applied for track possessions on lines used by passenger and/or mandatory path freight services, where the possession will align with a possession on an adjoining network.

The Network Planning Business Partner will provide advice to all relevant internal stakeholders of planned adjoining network possessions, to ensure that aligned possessions can be developed whenever possible, in preference to non-aligned possessions, that may require the cancellation of passenger or mandatory path freight services.

Table 1 - **Aligned Possession Notice Period**

Service cancellation requirement	Minimum weeks advice to Network Planning Business Partner (Network Operations)	Minimum weeks advice to rail operators
Passenger	28	26
Mandatory path freight	18	16

4.2 Non-aligned possessions

These are track possessions that cannot be aligned with a possession on an adjoining network and are classified as:

- a. Primary possession – delays or cancellation of passenger services or mandatory freight paths will be required, or
- b. Secondary possession – delays or cancellations will only affect ad hoc train paths.

4.2.1 Primary non-aligned possessions

Where a track possession cannot be aligned with a possession on an adjoining network, and where the proposed possession will require the cancellation of passenger and/or mandatory path freight services on lines or sections noted in Table 3, the notice periods for possession planning and implementation is detailed in Table 2.

Table 2 - Primary non-aligned Possession Notice Period

Service cancellation requirement	Minimum weeks advice to Network Planning Business Partner (Network Operations)	Minimum weeks advice to rail operators
Passenger	28	26
Mandatory path freight	18	16

Table 3 - Passenger and Mandatory Freight Service Lines / Sections

Line or Section	Passenger	Mandatory Path Freight
Bowenfels – Orange	Yes	Yes
Orange – Dubbo	Yes	Yes
Orange – Parkes interface	Yes	Yes
Joppa Junction – Canberra	Yes	Yes
Junee – Griffith	Yes	Yes
Werris Creek - Armidale	Yes	
Wallerawang – Airly Junction		Yes
Narromine – Cobar		Yes
Narrabri Junction – Wee Waa		Yes

4.2.2 Secondary non-aligned possessions

These are track possessions that are:

- not aligned possessions; or
- for lines or sections noted in Table 4; or
- proposed for lines or sections noted in Table 3 that do not require cancellation of, or delays to, passenger or mandatory pathed freight services; or
- proposed for works noted in Table 5; or
- that allow train services to continue operating under 'block working', or similar arrangements provided for under the UGLRL Network Rules.

Table 4 - Ad hoc and Non-Passenger Service Lines/Sections

Line/Section
Camurra – Weemelah
Wee Waa – Walgett
Burren Junction – Merrywinebone
Bogan Gate interface – Tottenham
Stockinbingal interface – Griffith
Temora – Lake Cargelligo
Ungarie – Naradhan
Griffith – Hillston
Troy Junction interface – Coonamble

The Rock interface – Boree Creek

Nevertire – Warren South

Notice periods for secondary track possessions are detailed in Table 5.

These notice periods incorporate the time required to produce and distribute CTNs, and to provide rail operators and other customers sufficient notice of proposed service disruption.

Table 5 - Low Effect Non-aligned Possession Notice Period

Proposed Works Possession	Minimum weeks advice to Network Planning Business Partner (Network Operations)	Minimum weeks advice to rail operators
Maintenance rolling stock possession, including movement of track machines and ultrasonic testing, but does not apply to track recording car movements.	8	6
Daily works possession. For completion of RM, MPM or other works between defined times within a single 24-hour period, between defined times or over defined blocks of time. The track will be made available for operation of services at completion of a Daily possession, or between Daily possessions.	8	6
Window works possession. Where RM, MPM or other works require track closure for a period more than [24-hours], or where multiple blocks of track closure time over multiple days are required between train services to complete works.	8	6

4.3 Short notice works possessions

This is a possession required to carry out works to rectify an infrastructure problem that may, if not rectified, lead to deterioration of infrastructure and potentially threaten service continuity.

The imposition of a short notice possession is managed by the Network Planning Business Partner on a case by case basis.

Table 6 - Short Notice Works Possession Notice Period

Proposed Works Possession	Minimum weeks advice to Network Planning Business Partner (Network Operations)	Minimum weeks advice to rail operators
Short notice works	As soon as possible	One (1) day to 6 weeks

4.4 Emergency works possessions

This is a track possession imposed to rectify an urgent infrastructure problem that is threatening, or will threaten, service continuity, or to address or remove a condition within the rail corridor that has the potential to escalate into a serious safety threat.

Table 7 - **Emergency Works**

Emergency Works Possession Notice Period		
Proposed Works Possession	Minimum weeks advice to Network Planning Business Partner (Network Operations)	Minimum weeks advice to rail operators
Emergency works	Not applicable	Not applicable

4.5 Request for Emergency Possessions

A request for an emergency works possession must be made directly to CRN Network Control and the relevant Network Control Officer (NCO).

Network Control Board	BAU Call	Priority Call	Emergency	Back-up Number	Public Free Call
West/North	TBA	TBA	TBA	TBA	TBA
South	TBA	TBA	TBA	TBA	TBA

5 Obtaining a Track Possession

This section provides the sequence of actions and decision points, from draft possession plans through to production and the issue of a CTN and associated documents.

5.1 Possession program development process

The Network Planning Business Partner in consultation with all relevant internal stakeholders and TAHE will develop a draft possession program, covering the period 1 July to 30 June, to align with the proposed delivery of routine maintenance and annual works plan programs.

The draft possession program will consider the following:

- Identification of opportunities for aligned possessions
- Identification of passenger and mandatory path freight service disruptions from non-aligned possessions
- Potential requirement for rescheduling of passenger or mandatory path freight services
- Proposed works under the AWP
- Scheduled routine maintenance requirements, such as ultrasonic testing, track recording car operations, etc.
- Service provision requirements under rail operator access agreements
- Known special events and related passenger train service demand
- Project planning advice from internal stakeholders including:
 - Resource availability.
 - Long lead time materials
 - Procurement tenders
 - Any other known service delivery requirements.

The Flowchart in Figure 1 highlights the track possession program development process.

Figure 1 - Application Flowchart

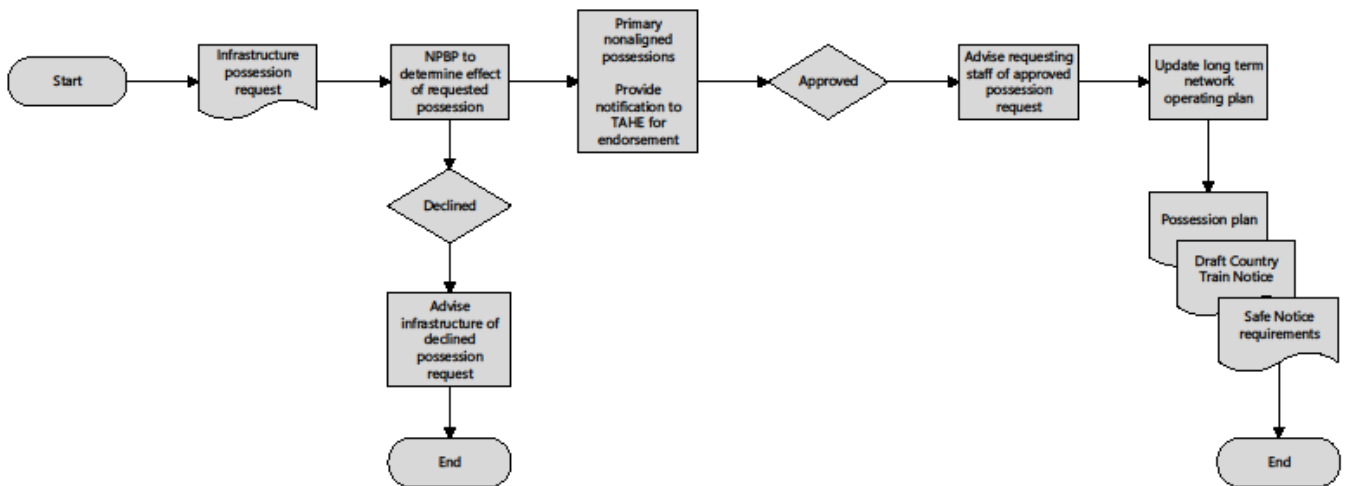
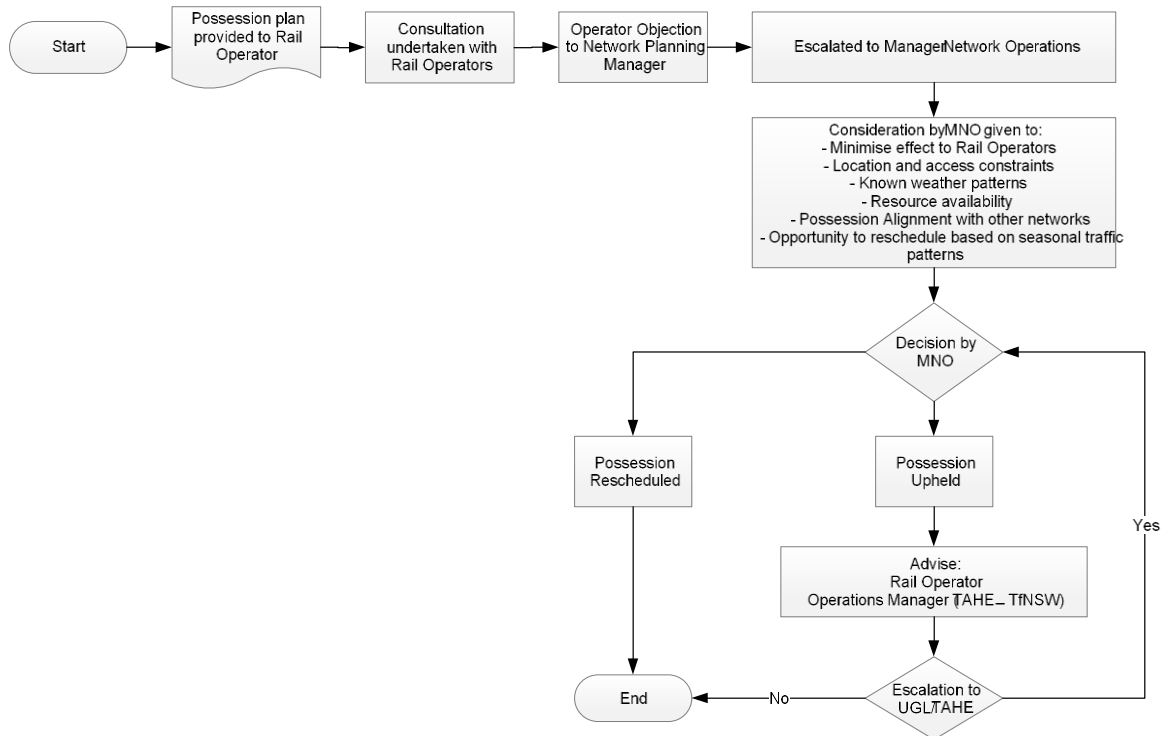


Figure 2 - Rail operator consultation process



5.2 Choosing the appropriate possession

The Network Planning Business Partner will work with internal stakeholders to determine what type of possession best suits the proposed works, considering the following factors:

- The effect of a proposed track possession on continuity of service delivery and rail services
- The location of the proposed works and track possession
- The scope of the works
- The requested period in which the works are to be performed
- The duration of the track possession requested
- In consultation with the party proposing a track possession, determine if the work can be carried out outside the danger zone and thus if a track possession may not be required
- Advice from the relevant project manager or supervisor regarding resource availability
- Inclusion of work trains or track machines to carry out the proposed works
- The need for sidings to be cleared of vehicles
- Any interruptions required to line-side operations by a third-party in order to allow works to be carried out safely, e.g. on sidings
- Factors related to Safe Working at network interfaces

5.3 Possession planning and implementation requirements

A project manager or works supervisor must ensure the following matters are considered and addressed prior to proposing to the NPBP a request for a track possession.

5.3.1 Infrastructure alterations

If any changes to infrastructure will result from proposed works, these must be clearly defined and approved prior to applying for a track possession and must be included in any possession application. This will allow for the preparation of relevant Safeworking documentation, such as Safe Notices or amendments to Country Network Local Appendices.

5.3.2 Location of Works

The location of a proposed work site or sites, and the works to be carried out at each site or sites, must be clearly defined and communicated within an application for a track possession.

5.3.3 Proposed track protection arrangements

The proposed track possession area must be protected in accordance with the UGLRL Network Rules & Procedures. Any proposed track protection variations must be approved by relevant internal stakeholders, prior to approval of a track possession.

5.3.4 Effect on rail services

The effect on rail services will be the primary consideration when assessing applications for all non-aligned track possessions.

Applicants seeking non-aligned track possessions must check the current track possession program to determine if the proposed location and/or date of a track possession will affect service continuity.

5.3.5 Preferred Work Dates

It is important to determine if the proposed works can be carried out within an aligned track possession to minimise disruption to train services.

If a non-aligned primary possession or short notice works track possession is required, it is necessary to clearly define preferred work dates, or a range of dates, to allow track possession alternatives to be considered, to reduce or eliminate any interruption to service delivery.

Note: the nomination of a date for a proposed track possession does not guarantee that a track possession will be approved for that date.

5.3.6 Duration of track possession

To determine the duration of a track possession, the Network Planning Business Partner (NPBP) will work with the applicant to determine the period required to complete the proposed works and to return the relevant section to operational status, including allocating sufficient time to:

- mobilise the workforce and to have all plant on site;
- assemble or stockpile materials on-site, either prior to or during the track possession, – Prepare the site;
- complete all the works and certify the track for resumption of operations;
- clean up and restore the site to the required standard; and
- allow for a contingency period for the effect of adverse conditions, e.g. rain.

Failure to allow enough time for a possession increases the risk of over-time works, which may affect the return of the line/section to operational status and thus may delay passenger or freight services.

Allowing too much time to complete works reduces network service availability and will cause delays to passenger and/or freight services.

The appropriateness of track possession durations will be monitored as a key performance indicator and used as a planning tool to minimise network service disruption.

5.3.7 Live Line Constraints

Live line constraints apply to:

- dual track sections of the network and include speed restriction on track adjacent to work sites where such restrictions may cause delays to services on adjacent lines; and
- any temporary speed restriction (TSR) applicable prior to, during and after work is completed.

Parties requesting track possessions in areas where live line constraints potentially apply must provide any proposed live line constraints to the NPBP in the track possession application.

Any live line constraint will be considered in the track possession approval process, and if approved, be included in relevant track possession program, CTN or Safe Notice.

5.3.8 Work train/track machine involvement

It is critical to ensure the inclusion of work trains or track vehicles as a component of proposed works requiring a track possession is communicated clearly to the NPBP at the time a possession request is made.

This will allow lead times for pathing across other networks can be met and to ensure that, where required, sidings can be cleared.

Failure to notify the NPBP of the inclusion of work trains or track vehicle movements within the boundaries of a possession at the time of application may lead to the possession application being declined, or to an approved track possession being cancelled.

6 Applying to Work Within an Aligned Possession

Table 8 outlines the requirements, timeline, responsibilities and application process for work within aligned possessions.

Table 8 - Aligned Possession Timetable

>12 Months	12-6 Months		8 Weeks	4 - 6 Weeks	2 - 4 Days
Coordinate Possession Dates with Stakeholders	Major Projects identified		Bids Close	Outstanding Actions Completed	PO Briefing
Sydney Trains	Confirm Possession Length		Possession Times Finalised	Approval "Go/No go" Possession Bids	
ARTC	Ensure No Conflicts		Pre-possession Meeting	Final CTN Published	
			Draft CTN		

Where possible, maximum use of aligned possession periods is encouraged, and as such late requests to include works within aligned possessions will be considered on a case by case basis.

Late requests should be supported by a clear statement of the benefits and costs associated with:

- including the proposed works within a planned possession; and
- not undertaking the works at the proposed time or within the planned possession.

7 Publication of Track Possession Documentation

7.1 Publication of the possession program

The CRN Possession Program will be updated and distributed to internal stakeholders, TAHE, rail operators, adjacent networks and other relevant parties. The possession program will be updated as required, where changes occur to works delivery or timing.

This possessions program will be published on or about the 20th of each month and distributed via email and uploaded to the CRN website **[To be advised]**

Publication of Country Train Notices must be at least 7 days, and up to 42 days, prior to the commencement of a planned track possession.

7.2 Rail operator consultation

The Network Planning Business Partner or delegate consults with relevant rail operators and other stakeholders about the track possession planning process and obtains feedback on the effect implemented possessions had on their operations and how planned possessions may affect their operations.

This feedback is incorporated into the track possessions planning process via the Network Planning Business Partner, to ensure rail operator views are considered when planning works.

7.3 Adjoining network consultation

The NPBP liaises with representatives of adjoining networks on a regular basis, including formal monthly discussions. This enables the NPBP to include track possession programs planned by these networks into the draft CRN possession program.

7.4 Consultation with the network owner

The Network Planning Business Partner will ensure the network owner (TAHE) is kept apprised of the development of the possessions program, and any changes to aligned and non-aligned possessions.

8 Track Possession Alterations

8.1 Changes to aligned possessions

Requests for changes to aligned track possessions must be submitted to the NPBP on the original request form marked as an Amendment [See Appendix 2] no less than 28 days prior to the commencement of the scheduled possession.

Requests are to be accompanied by a detailed description of why the approved aligned possession (or part thereof) is to be cancelled. The Network Planning Business Partner shall be responsible for decisions relating to an approval to change all or part of an aligned possession.

As the primary focus of possession planning is to reduce the effect of track closures on rail operations by aligning CRN possessions with those of adjacent networks, cancelling an aligned possession will only occur when no alternative strategy is available.

8.2 Changes to non-aligned possessions

A proposal to change an approved track possession must be submitted to the Network Planning Business Partner on the original request form marked as an Amendment [See Appendix 1] no later than 28 days prior to the commencement of the scheduled possession.

Requests are to be accompanied by a detailed description of why the approved aligned possession (or part thereof) is to be changed. The Network Planning Business Partner shall be responsible for decisions relating to an approval to change all of part of a non-aligned possession.

8.3 Cancelling a programmed track possession

A request to cancel a programmed track possession must be submitted to the Network Planning Business Partner on the original request form marked as an Amendment [See Appendix 3] no later than three (3) working days prior to the commencement of the scheduled possession.

Possession cancellation requests are to be accompanied with a description of why the possession is to be cancelled.

9 Additional Information

9.1 Work trains

Work train path requests for paths on the CRN must be sent to the Network Planning Business Partner at least 14 days prior to the commencement of a scheduled possession. Any amendment to a work train path on the CRN must be submitted to the CRN network programmer.

Any work train paths through the Sydney Trains or ARTC networks must be submitted to those networks at least 28 days prior to the commencement of a scheduled possession.

Work train path requests, once approved, will be published in the form of CTNs.

The NPBP will create a work train possession plan for each work train operating within a possession.

9.2 Ultrasonic testing

Ultrasonic rail testing (via an on-track testing car) is carried out in the CRN on specific train paths. Track possessions are not required for these movements.

The ultrasonic testing runs will be included as a component of the possession program and will be advertised via a CTN.



Appendix 1 UGLRL ATP Possession Request Form

This form is to be used 1 - 14 days out from the day of operations

Requesting Person:		Request date:			
Email:		Contact No:			
Protection Officer Name:		PO Contact Number:			
Proposal:	<input type="checkbox"/> New	<input type="checkbox"/> Amendment	<input type="checkbox"/> Cancellation		
Type of work:					
Location: <i>(Include Yard Limits)</i>	From:		To:		
	KM:		KM:		
Signals Required	From:		To:		
Protection Required	TOA		RCB		
Associated Rail Traffic Required	YES	NO	Safety Critical	YES	NO
Time Required (Hours)					
Resources Required:					
Date	Click here to enter a date.	Start Time		Finish Time	
Date	Click here to enter a date.	Start Time		Finish Time	
Date	Click here to enter a date.	Start Time		Finish Time	
Date	Click here to enter a date.	Start Time		Finish Time	
Date	Click here to enter a date.	Start Time		Finish Time	
Date	Click here to enter a date.	Start Time		Finish Time	
Date	Click here to enter a date.	Start Time		Finish Time	
Additional Information:					
Planning Officer Notes:					
Planning Officer:		Date Approved:	Click here to enter a date.		

Please email this form to: [\[Email Address still to be defined\]](#)

NOTE: ATP Possession requests are required to be submitted at least 24 hours prior to the day of operations

Appendix 2 UGLRL Long Term Possession Request Form

This form is for possession requests at least 14 days from day of operation

Project Number / ID:						
Requesting Person:		Request date:				
Email:		Contact No:				
Proposal:		<input type="checkbox"/> New		<input type="checkbox"/> Amendment		<input type="checkbox"/> Cancellation
Type of work: <small>(Include infrastructure that may be affected/booked out of use)</small>						
Track(s) required: <small>Include all loops and sidings applicable</small>						
Section/s and or Yards/s:		From:		To:		
		<input type="checkbox"/> Including <u>OR</u> <input type="checkbox"/> Excluding yard		<input type="checkbox"/> Including <u>OR</u> <input type="checkbox"/> Excluding yard		
Project location:		From:		To:		
		KM:		KM:		
Speed Restriction Details:						
From:		000.000KM		To:		000.000KM
Speed Imposed:				Track Speed:		
Placement Date:		<Date>		Lift Date:		<Date>
Proposed Possession Times:						
Cont.	Daily	From Date:	Time:	To Date:	Time:	
<input checked="" type="checkbox"/>	<input type="checkbox"/>	Click here to enter a date.	<Time>	Click here to enter a date.	<Time>	ATP
<input type="checkbox"/>	<input type="checkbox"/>	Click here to enter a date.	<Time>	Click here to enter a date.	<Time>	ATP
<input type="checkbox"/>	<input type="checkbox"/>	Click here to enter a date.	<Time>	Click here to enter a date.	<Time>	ATP
<input type="checkbox"/>	<input type="checkbox"/>	Click here to enter a date.	<Time>	Click here to enter a date.	<Time>	ATP
<input type="checkbox"/>	<input type="checkbox"/>	Click here to enter a date.	<Time>	Click here to enter a date.	<Time>	ATP
Protection Officer Details (if known):						
Name:				PO Contact Number:		
Protection Officer Beacon?		<input type="checkbox"/> Yes / No				
Planned Resources:						
Civil:						
Signals:						
Plant and Equipment:						
Permanent changes to signalling or infrastructure?						
Network Access Planning Officer:				Date approved:		Click here to enter a date.



		Internal Ref No(s).	
--	--	------------------------	--

Please email this form to: [\[Email Address still to be defined\]](#)

Appendix 3 UGLRL LPA Worksite Request Form

Advertised Closedown:

EXAMPLE: Werris Creek - Armidale (Aug 15-17)

Details:

Project Number / ID:	Click here to enter text.		
Requesting Person:	Click here to enter text.	Request date:	<Date>
Email:	Click here to enter text.	Contact No:	Click here to enter text.
Proposal:	<input checked="" type="checkbox"/> New	<input type="checkbox"/> Amendment	<input type="checkbox"/> Cancellation
Type of work: (Include infrastructure that may be affected/booked out of use)	Click here to enter text.		

Speed Restriction Details:

From:	000.000KM	To:	000.000KM
Speed Imposed:	40 / 40	Track Speed:	40 / 40
Placement Date:	<Date>	Lift Date:	<Date>

Proposed Worksite Times:

Cont.	Daily	From Date:	Time:	To Date:	Time:
<input type="checkbox"/>	<input type="checkbox"/>	Possession Start		Possession End	
OR					
<input type="checkbox"/>	<input type="checkbox"/>	<Date>	<Time>	<Date>	<Time>
<input type="checkbox"/>	<input type="checkbox"/>	<Date>	<Time>	<Date>	<Time>

Track(s) required: Include all loops and sidings applicable	Click here to enter text.			
Limits	From:	Click here to enter text.	To:	Click here to enter text.

Comments:	Click here to enter text.
------------------	---

Planned Resources

Civil:	Click here to enter text.
Signals:	Click here to enter text.
Plant and Equipment:	Click here to enter text.
	Click here to enter text.

Planning Officer:	Date approved:	Click here to enter a date.
	Internal Ref No(s).	Click here to enter text.



Please email this form to: [\[Email Address still to be defined\]](#)